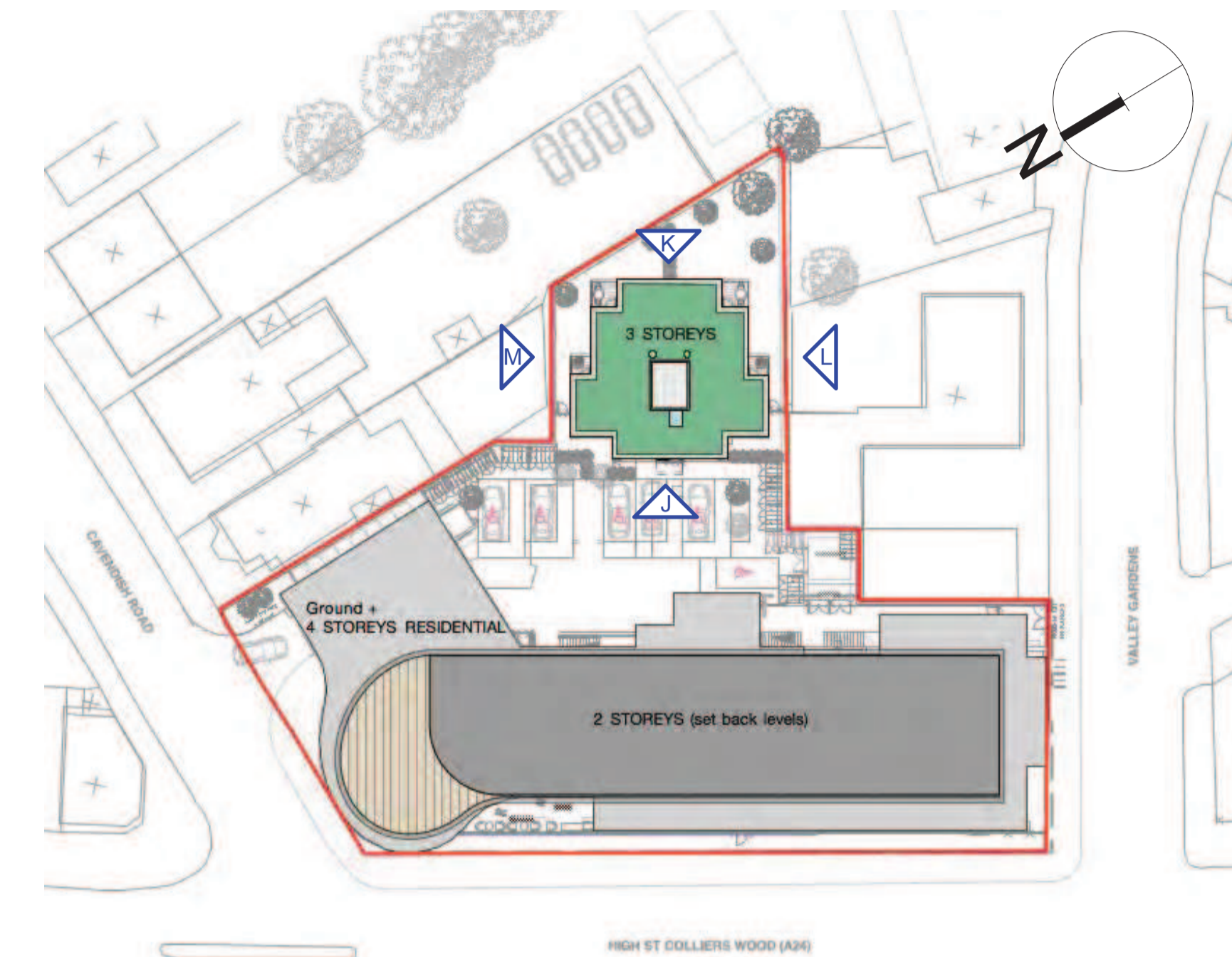


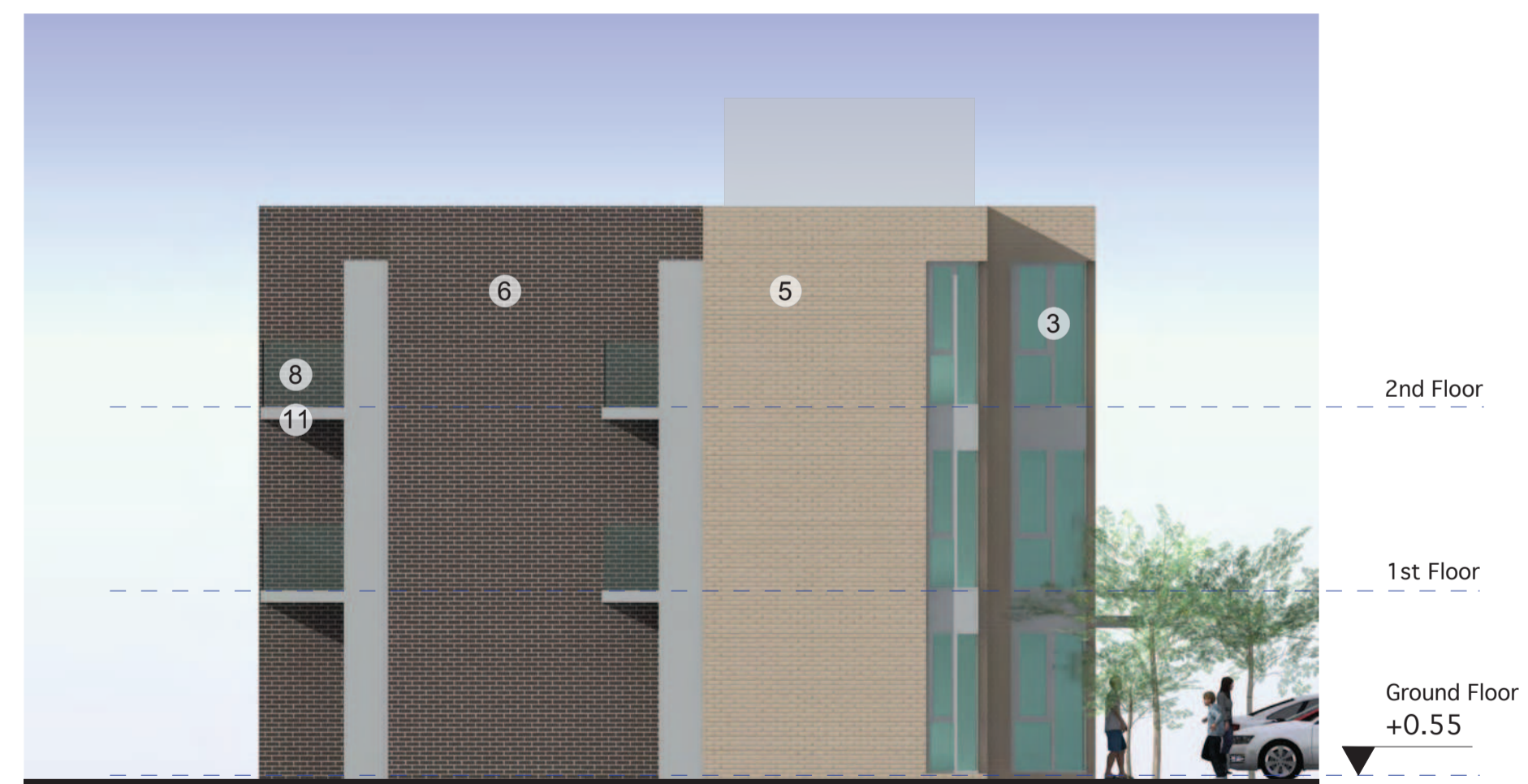
Proposed North West Elevation (J)
Scale 1:100@A1



Proposed South East Elevation (K)
Scale 1:100@A1



Proposed South West Elevation (L)
Scale 1:100@A1



Proposed North East Elevation (M)
Scale 1:100@A1

SCHEDULE OF PROPOSED MATERIALS

1	Ppc Pale Grey aluminium thermally broken shopfront with clear laminated/toughened double glazing and manifestation. Similar system to residential entrances incorporating ppc Deep Red RAL3000 solid panels for graphics.
2	Ppc Pale Grey aluminium cladding to Library lobby with matching automatic doors.
3	Ppc Pale Grey aluminium thermally broken windows with clear laminated/toughened double glazing.
4	4. Ppc Pale Grey aluminium thermally broken oriel windows with clear laminated/toughened double glazing. Ppc Deep Red RAL3000/ Mustard Yellow RAL1004/ Turquoise RAL6033/ Pale Grey insulated slides to oriel with matching coloured glass panels. Annealed glass or ppc insulated spandrel panels (Pale Grey).
5	Light Buff facing brickwork with matching mortar – bucket handle pointing.
6	Mid Grey facing brickwork with Pale Grey mortar – struck pointing.
7	Rheinzinc Blue/Grey small format zinc tiles.
8	Toughened frameless clear glass balustrading with grade 316 satin stainless steel handrail.
9	Ppc Pale Grey cantilevered aluminium profiled fascia and soffit.
10	Mill finish aluminium standing seam roof.
11	Balcony structure faced with ppc Pale Grey aluminium fascias. Galvanised mesh to underside to conceal structure. Toughened frameless clear glass balustrading with grade 316 satin stainless steel handrail. Balcony recesses Cream rendered.
12	Lift/stair enclosures faced with Rheinzinc Blue/Grey horizontal panels.
13	Pedestrian and vehicle gates Hammerite Silver smooth on galvanised SHS steel framing with 20mm diameter vertical infill bars.
14	First floor canopy over High Street frontage mill finish aluminium roof sheeting falling to a ppc back gutter draining to rainwater pipes concealed in brick piers all supported on a concealed steel frame with stainless steel McAlloy bar struts. Ppc Pale Grey fascia continued as a bottom trim to brickwork. Ppc White RAL9003 soffit planks.
15	Screening between upper floor terraces to comprise laminated glass panels with obscuring interlayer in a ppc Pale Grey steel frame.
16	Gates to refuse enclosure galvanised RSA framing with infill mesh.
17	Sheffield cycle stands, glazing protection rail and bollards satin stainless steel.
18	Paving to all areas, including car parking, to match LB Merton proposals for future re-paving of Colliers Wood High Street.

REV.	DATE	DESCRIPTION
PROJECT		
PROPOSED DEVELOPMENT CAVENDISH HOUSE COLLIERS WOOD		
DRAWING		
PROPOSED REAR BLOCK ELEVATIONS		
CLIENT		
URBGROUP PROPERTY DEVELOPMENT		
SCALE	1:100 @ A1	DRAWN
DATE	NOVEMBER 2014	CHECK
DRAWING No.	1438-PL2/11	REVISION
		B
© copyright retained		

LDA
Chartered Architects

LDA (Architects) Limited
Devonshire House
60 Station Road
Addlestone
Surrey, KT15 2AF
T. 01932 828933
F. 01932 828934
E. lda@ldaarchitects.co.uk

This page is intentionally left blank